

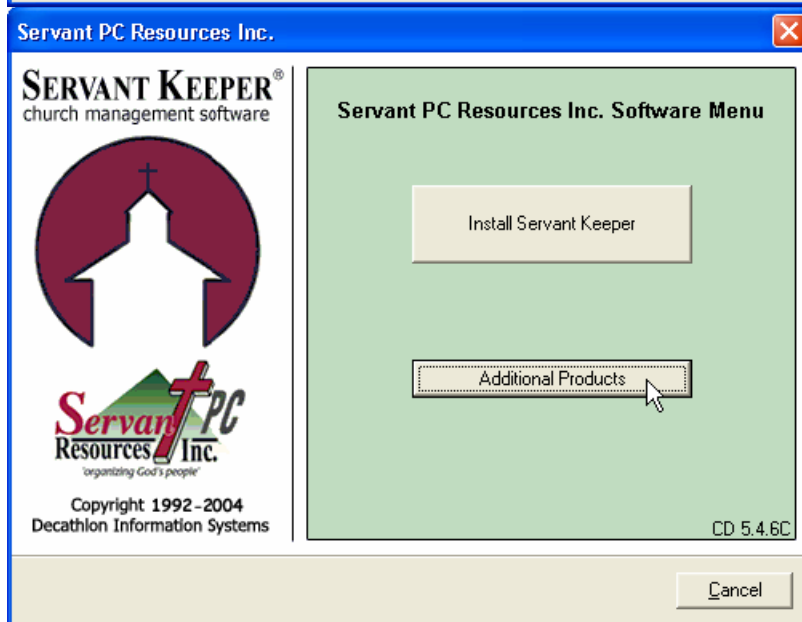
SK Help – Add Module

Use this help sheet when you need to add or change your registration information for Servant Keeper 5. This document assumes that you have CD version 5.4.6 or newer.



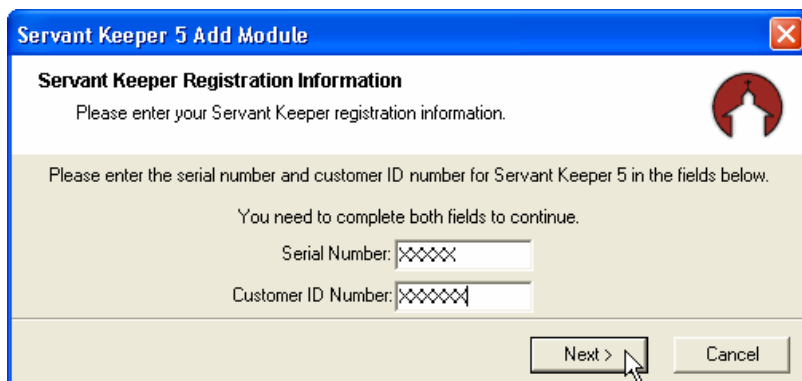
1. Insert the Servant Keeper CD version 5.4.6 or newer.
2. The CD will autorun and you will see the Servant PC Resources Inc. Software Menu.
3. Click the Additional Products button as shown in **Fig 1**.

Fig 1



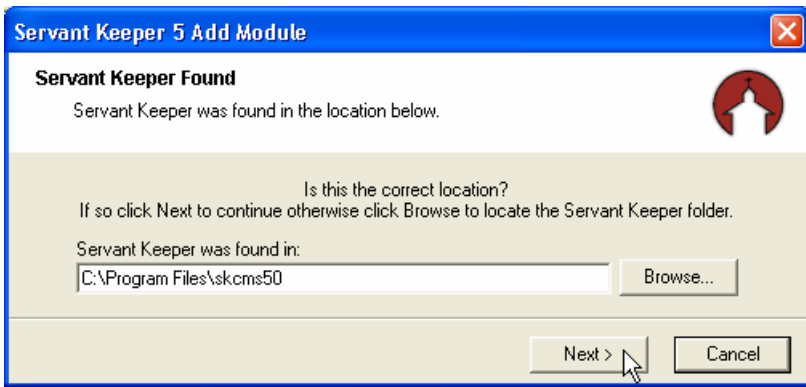
4. You will see the screen as shown in **Fig 2**.
5. Click **Add Module**.

Fig 2



6. Enter your Serial Number and Customer ID Number and click next as shown in **Fig 3**.

Fig 3



7. The program should find Servant Keeper on your computer. If not click the **Browse...** button and locate the Servant Keeper install folder on your hard drive(s). **Fig 4** This is usually C:\Program Files\skcms50. Then click **Next >**.

Fig 4



8. The program will add the new license information to your copy of Servant Keeper. Click OK as shown in **Fig 5** to finish and exit.

Fig 5