

## Setting local security for a limited user to use Servant Keeper 5.

This help sheets applies to Windows XP Professional with simple file sharing disabled and drive volumes formatted using NTFS.

1. Browse to the folder where Servant Keeper is installed. Usually C:\Program Files\SKCMS50.
2. Right click on the folder and click Properties. Then click the Security tab. (Figure 1)
3. Click the Add button to search for the user you want to adjust security for. (Figure 2)
4. Type the name of the user in the "Enter object names to select." (Figure 2) Then click OK.
5. The user if found will appear in the list from the first screen in the "Group or user names:" list.
6. Select the newly added user in the list.
7. In the permissions list for the new user make sure they are giving the follow "Allow" permission. (Figure 1)
  - a. Read & Execute
  - b. List Folder Contents
  - c. Read
  - d. Write

This will allow the limited user the minimum require access to the Servant Keeper program folder.

**Note:** Repeat steps 1-7 for the Servant Keeper preferences file **skcmsusr.ini** that is located in the Windows folder on the local computer.

Figure 1:

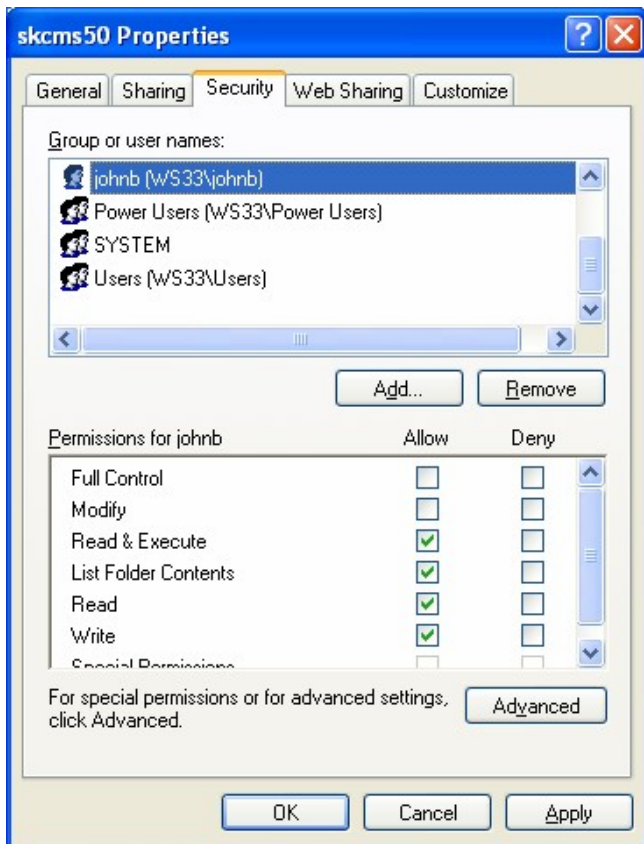


Figure 2:

